



SUNNY

SHANGHAI SUNNY ELEVATOR

629 04 Floor, Building 25, No. 1588 West Siping Road, Shanghai

Tel: 86 21 68604002

Fax: 86 21 67162226

Web: www.shsunney.com

Shanghai Sunny Elevator Co., Ltd.

Shanghai Sunny Escalator Co., Ltd.

Shanghai Sunny Escalator Co., Ltd.

Shanghai Sunny Escalator Co., Ltd.

SUNNY
SHANGHAI SUNNY ELEVATOR



**SHANGHAI
SUNNY
ELEVATOR**

Elevator/Escalator

A Safety Elevator Equipment From SUNNY

COMPANY PROFILE

A wonderful style bears a kind of high-grade life. Though we can not define what life means, We shall choose high grade life.



SUNNY Elevator opens a window of the world by high-tech.

It is competitive in the global markets because of the high quality.

Let's listen to the bell comes from the Black of the Rhine river in Germany, feel the gorgeous charm of magical art in the air.

We always pursue our objectives as time goes by.

SUNNY Elevator is always engaged in researching into, developing, manufacturing various building traffic and transport systems such as elevator, escalator, moving walk etc. Through the continual trials and hardships, SUNNY Elevator never changes its advanced technology.

SUNNY Elevator safely operates in all kinds of high grade buildings in over 120 countries and regions. As time flies, it continues the rigorous and concise flow spirits of the German nation. SUNNY Elevator provides the most superb elevators and escalators all over the world and opens the gate of the whole elevator system.

As a distinguished figure in the contemporary elevator industry, SUNNY Elevator witnesses the past and strides towards a bright future. It connects classical Germany art with the advanced modern technology. It links the western European buildings with the eastern Chinese style buildings.

Fresh new air, space talks to light, aesthetic combines with high-tech. Grace integrates with comfortable operation. It spontaneously creates a smooth urban sight line. It marks a big vision of SUNNY brand.

As a professional "one-stop" elevator and escalator solution provider, Shanghai Sunny elevator Co., Ltd. integrates the elevator research, development, design, production, sales, installation, repair, maintenance, modernization into one.

SUNNY Elevator is located in the most economically prosperous Changjiang River Delta Economic Zone (Zhangjiang District, Shanghai, China). It owns 28,000 square meters of modern factory zones in Jiaoguo Industrial Zone, Jiangsu District, Shanghai, China. Total investment is 50 million RMB. It builds up 60m high elevator test tower, 7 elevator test wells. It can annually produce 5,000 sets of various elevators and escalators.

SUNNY Elevator inherits the outstanding German manufacturing technology. It introduces the advanced innovation manufacture installations, combines with pioneer German elevator design concept. The first-class R&D, design, production, after service groups bring about fast, reliable, outstanding elevators and escalators for vast clients.

SUNNY Elevator accord with GB7588-2003 and European EN81 standards. It passes ISO9001 International Quality System Certification. It formal production process, the strict and comprehensive product inspection and testing system ensures the superior elevators and escalators with excellent operation.

SUNNY Elevator provides system client with the international product standards and operation experiences by the superior services. With the vigorous support of advanced management and innovative technology, it integrates with the abundant resources to enhance its strength. It leads the elevator industry. It offers you the unnecessary German experience. This is also the unchanged pursuit of SUNNY Elevator.

TECHNICAL STRENGTH

Effective, Speedy and High-End Intellectual Design

It gives first priority to effectiveness in vertical transport field. In order to fully optimize the service efficiency of the elevator system, SUNNY elevator fulfills the intellectual management such as fault computer, modular and network control etc. through fully computerized intellectual control system.

It actively looks back the elevator running conditions. It provides the passengers with the most efficient and gold-order services.



Serial Communication Technology

It adopts the network communication, which brings great reduction of the wires, enhancement of the reliability and less installation period.

Microcomputer Group Supervision Management System

Duty control runs floor running model satisfies the running requirements of the rush hours of fully shift the passengers in the office building and etc.

Even operation model adopts the minimized waiting period distribution principle with the prompt and reasonable elevator response.

Anti running model: The elevators have been evenly distributed in the designated area to wait for call in both lines in order to guarantee the quick and timely responses towards the outer calls.

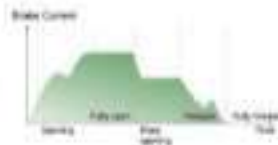
Remote Control System Ensures Intelligent Supervision

Through wire or wireless communication, the operation mode and accurate situation of passengers in elevators are real-time monitored in remote control center. Malfunctions are excluded before occurrence and repaired in the field to ensure the safety of passengers.



Mute Braking Control Technology

1. Compared with the traditional voltage open-loop control.
2. It applies the more accurate current closed-loop control mode.
3. It controls various stages of action speed and braking torque of the brake.
4. It greatly reduces noise in brake action.
5. It enhances the comfortable level.



Top Advanced Door Operator System

The door operator control system of SUNNY elevator applies dual control system. One group is controlled by main controller of control cabinet.

The other one is by door operator controller, which greatly reduces non-opening accidents due to trouble of door reactive control.



TOP TECHNICAL

To Give You A Wholely New Experience

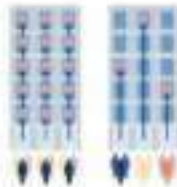


The business field high efficiency first, in order to fully optimize the service efficiency of business of elevator. Samsy by using the computer intelligent control system realizes the multi microcomputer module network control and other intelligent management. The elevator operation provides instant feedback offers the most efficient service for passengers.

Supervision System

Great supervision system of SAMSUNG Elevator is high-speed network processing service center. It can calculate the best elevator running mode in the building. The real-time traffic control performance comes from several "fuzzy computing" method.

The processing system is based upon the quick and effective genetic algorithm. It can choose the best travel route for the passengers so that they get the prompt service under any of the traffic conditions.



Fingerprint Identification

Super-soft finger used identification of the elevator control system is an utility model analyzes the electronic technology, and control the use of fingerprints identification technology elevator parked in the designated floor. Make the multi-story building entrance gate management improved, parking time to other persons into the building occupants harassment problems has solved.



Intelligent Card(IC) System Realizes Scientific and Safe Management of Rights and Authority

In accordance with the requirements of users, Intelligent IC card management system can be equipped to conduct real-time system of authority management, effectively avoid access of visitors and improve the safety of the building.



Through the system the card reader in the entrance, the authorization, sign after access.

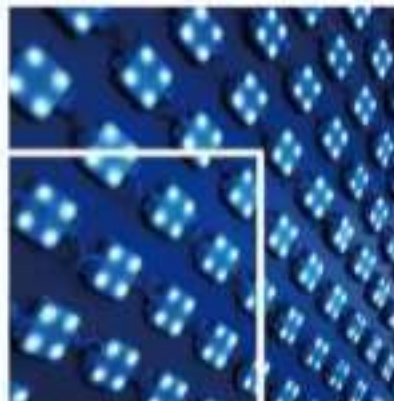


After elevator arrived, it would automatically go to the right floor. Moreover, the other floor is safety without need if you hold card.

ENERGY SAVING FROM SUNNY

Energy Feedback Technology

Highly energy-saving energy feedback technology is based upon Active-PWM control. It feeds back the synchronous regenerated green electric energy that is originally consumed by energy-consumption resistance to other power equipment. It thus averagely saves over 32% of energy compared with the ordinary VVVF elevators. It completely satisfied the related national electric energy saving standards.



LED Automatic Lighting in the Car

In addition to the product line of SUNNY Elevator, SUNNY elevator innovatively applies LED car lighting device. It has the advantages, such as safe, efficient, radiation-free, easy maintenance, etc. It is a major example of energy-saving in modern car. Well off the configuration of passenger elevator series includes automatic shut-off function of car entering and fan. It gives a full play of human-oriented design in SUNNY Elevator.

New Generation Permanent Magnet Synchronous Gearless Traction Machine

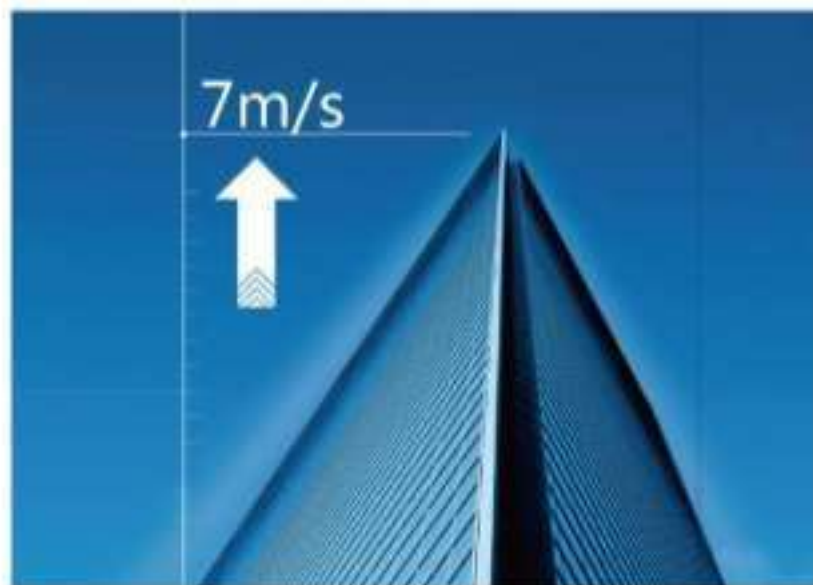
It can save over 42% of energy. It needs no grease renewal without oil pollution. It has long service life and high reliability.



Five Advantages

It is non-toxicity, contains over 90% of electric energy, 100% recycled energy. Longer service life and lower power consumption. The elevator consumes 20%-30% less of power. It does not add heavy metals during the assembling and processing. It excludes any hazardous materials. It can be recycled and reused after being dismantled.

HIGH SPEED ELEVATOR



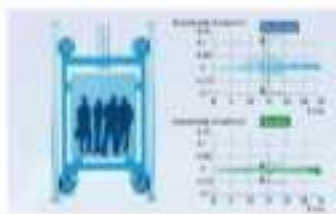
🔴 The Extremely Comfortable Travel

A shock-absorbing device is set between the car body and hoist to isolate vibration. It superiorly buffers vibration during the elevator run-up process. It reduces the car vibration and prompts the comfortable travel to vast passengers. The combined car wall connection ensures noise effects in the car, the stable and reduced air pressure.

🔴 High Speed Serials Specification Table

Travel speed	The maximum & high grade of the commercial building
Control system	VVVF
Destination system	Destination signal to entrance & gateway
Car operation	VVVF drive operation
Car use height	2000mm
Rated load/kg	1000/1200/1500/2000/2500/3000
Rated speed/m/s	1.5/2.0/2.5/3.0/3.5/4.0/5.0/6.0/7.0
Rated supply voltage	380V/50Hz/3Phase/4W/PE
Rated power/kw	5

🔴 Car Vibration System



High Speed Elevator Construction Sketch



High speed elevator parameter table

Rated speed	Rated load	Rated car capacity	Rated car height	Rated car width	Rated car depth	Rated car length	Rated car width	Rated car depth	Rated car length
800	2.5	1000/1200	1900/1950/2000	2000/2050	2000/2050	2000	2000	2000	1900
	3.0	1000/1200	1900/1950/2000	2000/2050	2000/2050	2000	2000	2000	1900
3.5	2000					2000	2000	1900	
4.0	2000					2000	2000	1900	
4.5	2000					2000	2000	1900	
1000	2.5	1000/1200/1500	1900/1950/2000	2000/2050	2000/2050	2000	2000	2000	1900
	3.0					2000	2000	2000	1900
3.5	2000					2000	2000	1900	
4.0	2000					2000	2000	1900	
1100	2.5	1000/1200/1500	1900/1950/2000	2000/2050	2000/2050	2000	2000	2000	1900
	3.0					2000	2000	2000	1900
3.5	2000					2000	2000	1900	
4.0	2000					2000	2000	1900	
1200	2.5	1000/1200/1500	1900/1950/2000	2000/2050	2000/2050	2000	2000	2000	1900
	3.0					2000	2000	2000	1900
3.5	2000					2000	2000	1900	
4.0	2000					2000	2000	1900	
1300	2.5	1000/1200/1500	1900/1950/2000	2000/2050	2000/2050	2000	2000	2000	1900
	3.0					2000	2000	2000	1900
3.5	2000					2000	2000	1900	
4.0	2000					2000	2000	1900	
1500	2.5	1000/1200/1500	1900/1950/2000	2000/2050	2000/2050	2000	2000	2000	1900
	3.0					2000	2000	2000	1900
3.5	2000					2000	2000	1900	
4.0	2000					2000	2000	1900	
1600	2.5	1000/1200/1500	1900/1950/2000	2000/2050	2000/2050	2000	2000	2000	1900
	3.0					2000	2000	2000	1900
3.5	2000					2000	2000	1900	
4.0	2000					2000	2000	1900	
1800	2.5	1000/1200/1500	1900/1950/2000	2000/2050	2000/2050	2000	2000	2000	1900
	3.0					2000	2000	2000	1900
3.5	2000					2000	2000	1900	
4.0	2000					2000	2000	1900	

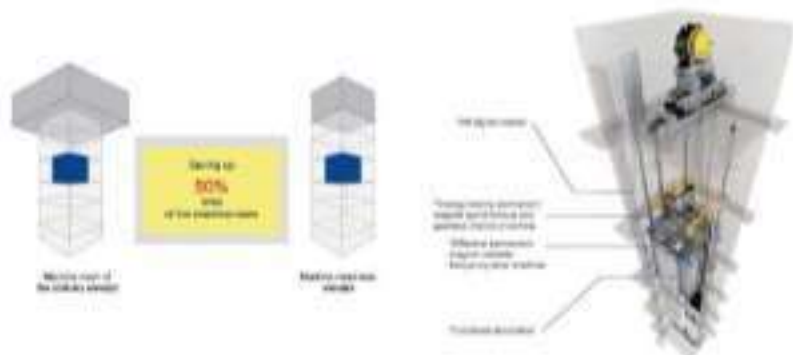
Note: Dimensions only for data reference, please contact us for detailed information.

SMALL MACHINE ROOM ELEVATOR

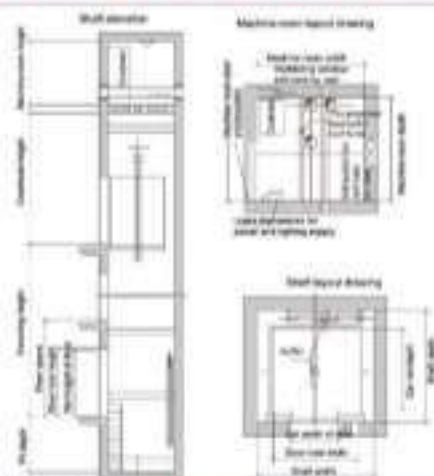


It Fulfills Small Cost

Small machine room elevators come with integrated carriages, so that it makes the machine room size same as well as. It covers the equal area as that of the wall. At the same time of reducing the machine room height it lowers the building outlook. It fulfills super small standard of machine room space and building cost.



Small Machine Room Elevator Construction Sketch



Small machine room elevator parameter table

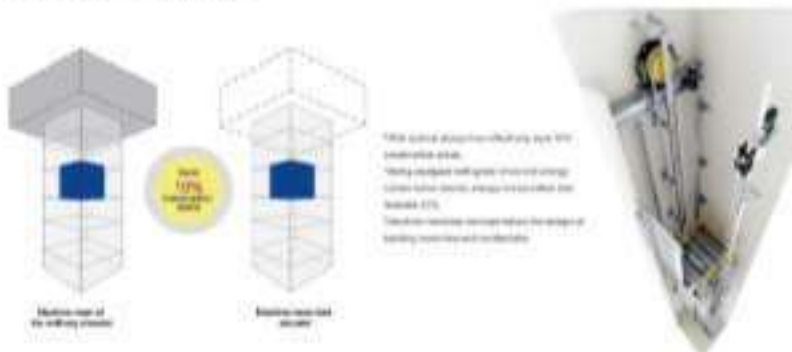
Capacity	Load (kg)	Speed (m/s)	No. of car doors		Shaft system			Machine room system	
			1 door (2.0m)	2 doors (2.0m)	1.0m	1.5m	2.0m	2.0m (2.0m)	2.0m
5	400	1.0	1400*1000*2000	800*2100	2000*1500	800	1000	2000*1500	2000
		1.5	1400*1000*2000	800*2100	2000*1500	800	1000	2000*1500	2000
		2.0	1400*1000*2000	800*2100	2000*1500	800	1000	2000*1500	2000
10	800	1.0	1400*1000*2000	800*2100	2000*1500	800	1000	2000*1500	2000
		1.5	1400*1000*2000	800*2100	2000*1500	800	1000	2000*1500	2000
		2.0	1400*1000*2000	800*2100	2000*1500	800	1000	2000*1500	2000
14	1000	1.0	1400*1000*2000	800*2100	2000*1500	800	1000	2000*1500	2000
		1.5	1400*1000*2000	800*2100	2000*1500	800	1000	2000*1500	2000
		2.0	1400*1000*2000	800*2100	2000*1500	800	1000	2000*1500	2000
16	1200	1.0	1400*1000*2000	1000*2100	2000*1500	800	1000	2000*1500	2000
		1.5	1400*1000*2000	1000*2100	2000*1500	800	1000	2000*1500	2000
		2.0	1400*1000*2000	1000*2100	2000*1500	800	1000	2000*1500	2000
18	1300	1.0	1400*1000*2000	1000*2100	2000*1500	800	1000	2000*1500	2000
		1.5	1400*1000*2000	1000*2100	2000*1500	800	1000	2000*1500	2000
		2.0	1400*1000*2000	1000*2100	2000*1500	800	1000	2000*1500	2000
21	1600	1.0	1400*1000*2000	1500*2100	2000*1500	800	1000	2000*1500	2000
		1.5	1400*1000*2000	1500*2100	2000*1500	800	1000	2000*1500	2000
		2.0	1400*1000*2000	1500*2100	2000*1500	800	1000	2000*1500	2000
24	1800	1.0	1400*1000*2000	1500*2100	2300*1500	800	1000	2300*1500	2000
		1.5	1400*1000*2000	1500*2100	2300*1500	800	1000	2300*1500	2000
		2.0	1400*1000*2000	1500*2100	2300*1500	800	1000	2300*1500	2000

MACHINE ROOM-LESS ELEVATOR

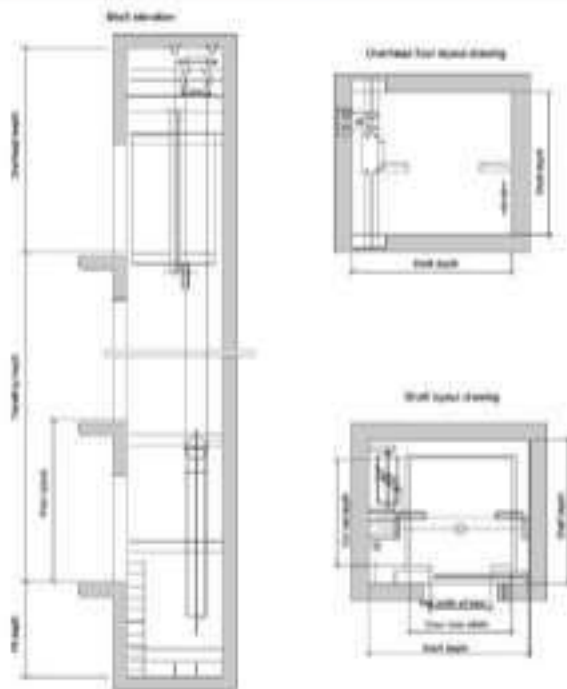


Greatness in Trivialness Intellectual and Outstanding

ELVHT machine room less elevator series excellent for restriction to the elevator to the construction, building cost, building design style, use range. At the same time of saving the space and cost, it provides the passengers with upper level intellectual, effective and stable travel.



Machine Room-less Elevator Construction Sketch



Machine room-less elevator parameter table

Person	Load (kg)	Speed (m/s)	Net size of machine room		Shaft dimension		
			W (mm) x H (mm)	D (mm)	W (mm)	H (mm)	
5	400	1.0	1100*1100*2400	800*1100	1000*1400	1000	1400
		1.2	1400*1100*2500	800*1100	1000*1500	1000	1500
		1.5	1400*1100*2500	800*1100	1000*1500	1000	1500
10	800	1.0	1400*1300*2500	800*1100	1000*1500	1000	1500
		1.2	1400*1300*2500	800*1100	1000*1500	1000	1500
		1.5	1400*1300*2500	800*1100	1000*1500	1000	1500
15	1200	1.0	1400*1500*2500	800*1100	1000*1500	1000	1500
		1.2	1400*1500*2500	800*1100	1000*1500	1000	1500
		1.5	1400*1500*2500	800*1100	1000*1500	1000	1500
20	1600	1.0	1400*1600*2500	1100*1100	1000*1500	1000	1500
		1.2	1400*1600*2500	1100*1100	1000*1500	1000	1500
		1.5	1400*1600*2500	1100*1100	1000*1500	1000	1500
25	2000	1.0	1400*1600*2500	1100*1100	1000*1500	1000	1500
		1.2	1400*1600*2500	1100*1100	1000*1500	1000	1500
		1.5	1400*1600*2500	1100*1100	1000*1500	1000	1500

Not followed only by other dimensions unless design is different

SQUARE OBSERVATION ELEVATOR



Superior Car Wall

If safety lights cannot be removed from the glass, it is transparent. The passengers might appreciate the large and generous view right through the transparent car wall. Lamination layer is laminated glass resist radiation. It buffers sound waves effectively and reduces the sound. Large size car wall glass design always smooth and beautiful view. It beautifies the elevator car outline. Furthermore, the buildings are attractive.

Super large viewing field

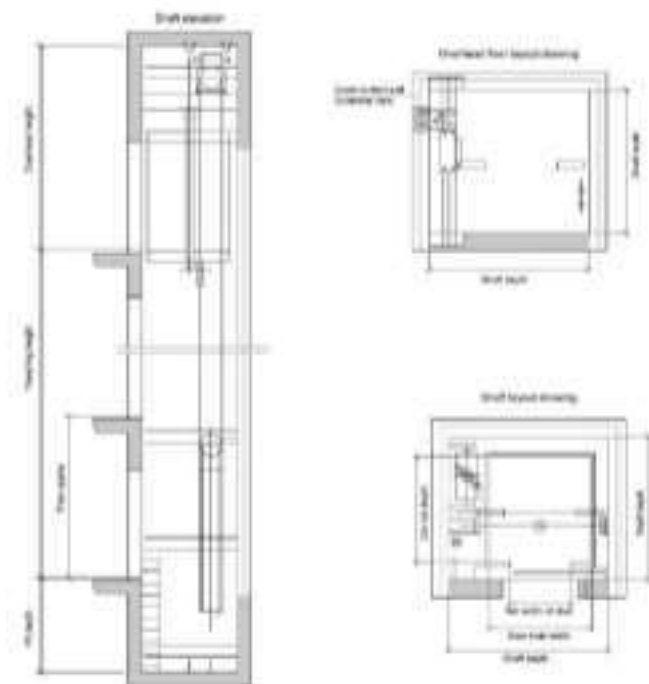
Full transparent lift car design can expand the field of view. Through the visual exterior, passengers can have a panoramic view of all the beautiful scenery.

Multiple lift car shapes

Round square and elliptic and other lift car shapes are optional, perfectly corresponding to different architectural styles.



Square Observation Elevator Construction Sketch



Square machine combination counter elevator parameter table

Person	Load kg	Speed m/min	Full size of car wall		Full size of glass wall		Shaft opening	
			1.2m x 1.2m	1.2m x 1.2m	1.2m x 1.2m	1.2m x 1.2m	1.2m x 1.2m	1.2m x 1.2m
8	400	1.0	1100*1100*2500	800*700	1000*1000	1000	1000	1000
8	600	1.0/1.75	1400*1400*2500	800*700	1200*1200	1200	1200	1200
10	800	1.0	1400*1400*2500	800*700	1200*1200	1000	1000	1000
		1.25				1000	1000	1000
		1.5				1000	1000	1000
		1.75				1000	1000	1000
14	1000	1.0/1.75	1400*1400*2500	800*700	1200*1200	1200	1200	1200
		1.25				1200	1200	1200
		1.5				1200	1200	1200
		1.75				1200	1200	1200
20	1600	1.0	1600*1600*2500	1000*700	1400*1400	1400	1400	1400
		1.25				1400	1400	1400
		1.5				1400	1400	1400
		1.75				1400	1400	1400
25	2000	1.0/1.75	1600*1600*2500	1000*700	1400*1400	1400	1400	1400
		1.25				1400	1400	1400
		1.5				1400	1400	1400
		1.75				1400	1400	1400

Manufacture only for steel structure glass counter elevator system.

SEMICIRCLE OBSERVATION ELEVATOR



Outer Glass Hood

It harmoniously combines with the building and surrounding landscape. The elevator is part of the building. It also adds a modern charring color for the building.

Outstanding sound insulation

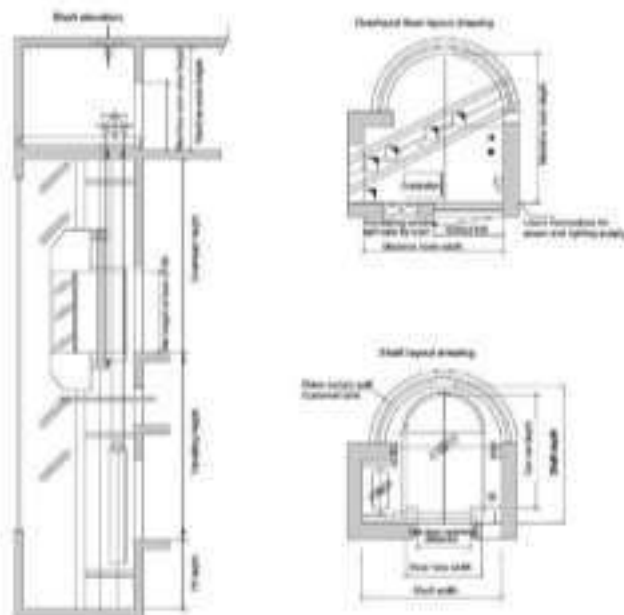
The structure of the lift car is further optimized, which facilitates the elevator to achieve excellent sound insulation effect and customers to have quiet and steady using experience.

Diversified decoration design

There are a series of optional materials and colors for handrails, doors, handles and lift car walls, thus truly realizing individualized customized service.



Semicircle Observation Elevator Construction Sketch



Semicircle matrix semicircle glass elevator parameter table

Floor	Load (kg)	Speed (m/s)	No. of people (stand)		Shaft opening			Matrix glass opening	
			11.0m x 22.0m	20' Square opening	11.0m x 11.0m	11.0m	11.0m	11.0m x 11.0m	11.0m
5	500	1.5	400*1600*2000	500*2100	2200*1100	800	900	2200*1100	2000
		1.2				400	500		
		1.0				300	400		
		0.8				200	300		
10	500	1.5	1000*1600*2000	500*2100	2200*2200	800	900	2200*2200	2000
		1.2				400	500		
		1.0				300	400		
		0.8				200	300		
15	500	1.5	1500*1600*2000	500*2100	2200*3300	800	900	2200*3300	2000
		1.2				400	500		
		1.0				300	400		
		0.8				200	300		
20	500	1.5	2000*1600*2000	500*2100	2200*4400	800	900	2200*4400	2000
		1.2				400	500		
		1.0				300	400		
		0.8				200	300		
25	500	1.5	2500*1600*2000	500*2100	2200*5500	800	900	2200*5500	2000
		1.2				400	500		
		1.0				300	400		
		0.8				200	300		

Noted: Parameters only for glass observation elevators (except 2000*2000).

HOME ELEVATOR



✔ Your Perfect Life is Comfortable and Relaxing

The humanization design decreases your notice life space. We provide your life grade in the series of high & new tech. SUNEVI home elevator brings about a more convenient and high-grade life.

It displays the outstanding properties in a limited space. It has no machine room. Extremely small top-floor height can match with various old and new residences. Relying on the standard track installation system, the elevator can be installed more quickly and conveniently. In addition, the smooth start and braking system bring about the safe stable elevator operation.

Therefore you feel more comfortable in the elevator travel.

✔ The Characteristics of Home Elevator

No need of isolated machine room, without any construction cost increase. Specially designed trackback frame for the home elevator with better than 21 VVVF drive technology. SUNEVI home elevator approximate main processing control.

*Site + other composite gate drive.

*The appropriate vector machine inverter is fixed on the guide rail.

The building will not have any load.

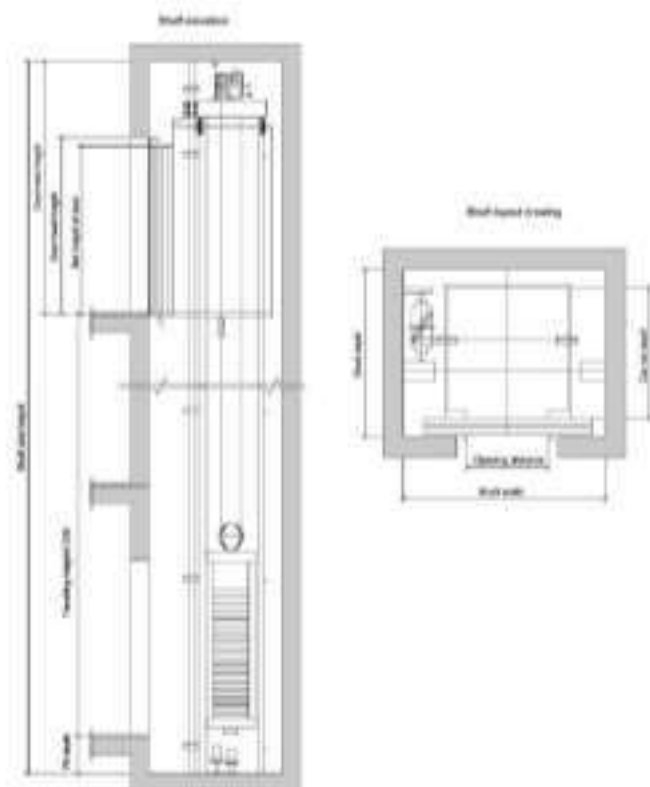
*We apply 220V single phase home elevator special machine.

*Automatic speed door machine synchronous driving belt transmission, TUV CE Certification patent.

*Comply with home elevator national standard GB7121-2008.



Home Elevator Construction Sketch



Home elevator parameter table



Floor	Load (kg)	Speed (m/s)	Net size of machine	Net size of shaft	Shaft extension		
			(mm) (mm)	(mm) (mm)	(mm)	(mm)	(mm)
3	350	0.4	800*1300*2200	750*200 (Shaft size)	1400*1500	1000	400
4	350	0.4	900*1300*2200	750*200	1400*1500	1000	500
5	400	0.4	1000*1300*2200	750*200	1400*1500	1000	600

*Net size refers only to steel structure, please contact factory for details.

PERFECT FUNCTION

• Standard Function

 Travel Function	WVF drive	Motor running speed can be precisely adjusted to get the most speed when in 0% load, level and stop and get the energy recovery.
	WVF drive speeds	Motor running speed can be precisely adjusted to get the most profits and sensitive clear machine working.
	Independent running	The lift can run without load setting, but only respond to the command made for use through the action system.
	Automatic close without stop	When the car is crowded with the passengers or the load is close to preset value, the car will automatically close the landing landing in order to keep maximum travel efficiency.
	Automatic close after running time	After open time set automatically adjusted according to the different passenger waiting setting or car setting.
	Regard full load call	In the door closing process, press stop with full collection can reset the door.
	Excess door closing	When the lift stops and opens the door, press door shut button, the door will be closed immediately.
	Car stops and door open	The lift decelerates and levels, the door only opens after the lift comes to a complete stop.
	Continuous regular service	If you press the wrong floor command button in the car, the continuous pressing of same button can cancel the signal.
	 Safety Function	Photoelectric protection
Designated stop		If the lift can not open the door in the destination floor out of work needs, the lift will stop the door and travel to the next designated floor.
Overhaul running stop		When the car is overhauled, the button stops and stops the lift in the same floor.
Anti-slip floor protection		The lift stops operation due to slipping traction wire break.
Start protection control		If the lift door not leave close time within the designated time after it gets started, it will stop the operation.
Inspection operation		When the lift works into inspection operation, the car remains at landing running.
Door self diagnosis		The controller can receive 02 status feedback in all to quickly remove the trouble and before the lift operation.
Repeated door closing		If the lift can not close the door due to certain obstacle or interference, the lift will stop, or re-closed the door and continue to drive.
Lightness and not and floor level protection		The sensor can effectively prevent from the lift's running in the top or breaking the bottom when it is out of the control. It results in the floor level and relative lift level.
Speed over-speed protection device		When the elevator speed 1.5 times higher than the rated speed, this device will automatically cut off control power and the motor running so as to stop the motor at over-speed. If the lift continues to drive at over-speed, and the speed is 1.4 times higher than rated speed, spring brake will to force the lift stop in order to enhance the safety.
Upper over speed protection device	When the lift speed 1.2 times higher than rated speed the device will automatically decelerate to brake the lift.	
 Door-machine interface	Door lock button for car call and hall call	Door lock touch button is used for operating panel return and button in the car and sending calling button.
	Door and machine indicator on	The car shows the lift floor location and current travel direction.
	Door and machine indicator	The landing panel shows the lift floor location and current travel direction.

 Emergency Function	Emergency car lighting	Emergency car lighting automatically switches when there is power failure.
	Emergency running	When the elevator enters into emergency speed operation, the car travels at low speed running driving.
	The stop protection	Communication and car call log provided for the user, call up and release duty coast through wireless mode.
	Run	In emergency condition, if call button does not work, you can continuously press the external stop in hall or car call.
 Emergency Function	The ventilation light automatically off	If there is no calling or emergency signal within the designated time, the car fan and lighting will be automatically closed in order to save the energy.
	Rescue stop off	The elevator can be order to rush landing after finishing the service through the key switch and automatically enter the service.

• Optional Function

 Emergency Function	Locking when power failure	In normal power failure, the storage battery supplies the elevator to power. The elevator stops in the nearest landing.
 Travel Function	Anti-collision	In the light elevator load, when there more demands appear, in order to avoid the unnecessary parking, all the registered callings in the car will be cancelled.
	Open the door in advance	When the elevator decelerates and enters into door open speed, it automatically opens the door to enhance the travel efficiency.
	Short parking	It completely accords with elevator principle self-to-closing in the landing. It greatly enhances the travel efficiency.
	Group control function	When there are more than one lift groups are controlled in use, the lift group can automatically choose the most appropriate response. It avoids the repetition of parking, reduces the passengers' waiting time and increases the travel efficiency.
	Smaller current	The use of more novel elements can continuously improve the calling signal through the optical inductor in the shaft, it reduces the passenger's waiting time to the greatest extent and enhances the travel efficiency as well.
	On-duty power service	When the power supply line (power) is stopped from the house building is extremely long. The lift are continuously dispatched to the house building in order to satisfy visiting guest service.
	Off-duty power service	When the power off duty period, the lift are continuously dispatched to top floor in order to satisfy off-duty guest service.
	Door open time extending	Press special button in the car, the lift door keeps open for certain period of time.
	Car not off going	When long in the car by accident had the passengers enter.
	 Door-machine interface	Door emergency
Car accident emergency stop		It is used to the large landing weight lift or the elevator with crowded passengers so that make and more passengers can use the car.
Operation call for the handbrake		It is convenient for the wheelchair passengers and those who have vision problems.
 Monitor Function	Intelligent calling service	The car command at least can be calling via the mobile or connected through wireless emergency signal.
	AI call order function	AI specific settings can only input via computer through 02 call order authorization.
	Rescue monitor	The elevator using - rescue monitor and control can be fulfilled through monitor and equipment. It is convenient for the technician and service units to track trace the basic condition of every elevator and promptly take the corresponding measures.
	Rescue control	The lift can have rescue when there according to the specific requirements through operation monitor screen-terminal.
Service function in the car	The service is related to the car number for the car services.	

STANDARD CONFIGURATION



SN-CD-106 **Standard**

Stainless steel car

Ceiling SN-CC-809 style, arched top plate, bright lighting

Car wall: Hairline stainless steel

Operation panel: SN-COP-010

Car door: Hairline stainless steel, center opening

Floor: SN-CF-601

Operation panel



SN-COP-010

Landing door



SN-OP-321



SN-OP-318



SN-OP-395

Ceiling



SN-CC-809

Arched top plate, bright lighting



SN-CC-837

Optional LED recessed panel,
LED down lamps on both sides

Floor



SN-CF-601



SN-CF-603



SN-CF-604

Outbound call



SN-LOP-010



SN-LOP-010B

PASSENGER ELEVATOR CAR DECORATION

ECONOMIC SERIES



SN-CD-108 Economic Solution

Ceiling: 31.5t frame with mtb white acrylic lighting down two sides.
Middle Panel: Mirror, Etching.
Side Panel: Horizontal.
Handrail model: SN-CH-701



SN-CD-105

Ceiling: 31.5t frame with white acrylic lighting panel.
Middle Panel: Mirror.
Side Panel: Mirror, Etching.
Handrail model: SN-CH-701



SN-CD-118

Ceiling: 31.5t frame with white acrylic lighting panel.
Middle Panel: Mirror, Etching.
Side Panel: Horizontal.
Handrail model: SN-CH-701



SN-CD-107

Ceiling: 31.5t frame with multi-layer lighting board, acrylic lighting down.
Middle Panel: Mirror, Etching.
Side Panel: Horizontal.
Handrail model: SN-CH-701



SN-CD-109



SN-CD-101



SN-CD-102



SN-CD-104



SN-CD-100



SN-CD-103



SN-CD-106



SN-CD-108



SN-CD-100

PASSENGER ELEVATOR CAR DECORATION

-MODERN SERIES-



SN-CD-113 Modern Solution

Ceiling: St.316 frame with white acrylic lighting panel.
Middle Panel: Mirror, Hairline, Etching.
Side Panel: Mirror.



SN-CD-110



SN-CD-42R



SN-CD-42E



SN-CD-110

Ceiling: St.316 frame with white acrylic lighting panel.
Middle Panel: Mirror, Etching.
Side Panel: Patterned Woodgrain Glass.
Handrail: wood. SN-CD-110



SN-CD-112

Ceiling: St.316 frame with white perforated acrylic lighting panel.
Middle Panel: Mirror, Etching.
Side Panel: Mirror.



SN-CD-41E



SN-CD-43R



SN-CD-43E

SN-CD-111

Ceiling: St.316 frame with green white acrylic lighting panel.
Middle Panel: Mirror, Etching.
Handrail: Ceramic Green.
Side Panel: Mirror, Etching, Hairline, Ceramic Green.



SN-CD-44R



SN-CD-45R



SN-CD-45E

PASSENGER ELEVATOR CAR DECORATION

LUXURY SERIES



SN-CD-407 Luxury Solution

Condole top: Mirror stainless steel border, medium is white organic transparent board

Center plate: leather soft top

Auxiliary plate: mirror, iron, stainless steel

Handrail: organic glass armrest

Floor: 2mmPVC spine (optional marble)



= SN-CD411



= SN-CD413



= SN-CD418



= SN-CD415



= SN-CD419



= SN-CD420



SN-CD-408

Condole top: four sides mirror stainless steel border, middle mirror stainless steel
Back wall: concealed light, LED light
Center board: leather soft top, wood decoration

Auxiliary board: Center of the mirror stainless steel, surrounding wood decoration
Decorative board
Handrail: stainless steel/glass handrail



SN-CD-410

Condole top: wooden condole top border, side long mirror
Back wall: Wood screen, advertising frame, mirror stainless steel (self-care of advertising drawing replacement)
Side wall: wood decoration, LED light
Handrail: stainless steel leather armrest

SN-CD-409

Spring: stainless steel stainless steel, common roof, long lighting
Center plate: mirror, and grill, mirror
Auxiliary board: mirror, and grill, mirror
Handrail: wood and stainless steel combination round tube handrail



= SN-CD405



= SN-CD417



= SN-CD402



PANORAMIC ELEVATOR CAR DECORATION



SN-CD-912 Economic Solution

Upper and lower cover: Steel plate spraying
 Sightseeing wall: Safety slip glass
 Decorative top: HM-437 ceiling
 Cage wall: Safety slip glass
 Handrail: Stainless steel plate
 Floor: PVC floor



ECONOMIC SERIES



SN-CD-002

Upper & Lower Cover: Heating
 Viewing Glass: Laminated
 Glass (5LYERS)
 Cabin Wall: Heating SLUB
 Handrail: SLUB Tube
 Floor: PVC



SN-CD-010

Upper & Lower Cover: Heating
 with Light Deck
 Viewing Glass: Laminated Glass(5
 Layers)
 Cabin Wall: Heating SLUB
 Handrail: SLUB Tube
 Floor: PVC

SN-CD-001

Upper & Lower Cover: Heating
 Heating Glass: Laminated
 Glass(5Layers)
 Cabin Wall: Heating SLUB
 Handrail: SLUB Tube
 Floor: PVC



SN-CD-013

Upper and lower cover: Steel plate
 spraying with acrylic decorative strip
 Sightseeing wall: Three pieces of
 safety glass
 Decorative top: Integral board and the
 letters on both sides
 Cage wall: Stainless steel plate
 Handrail: Stainless steel double pipe
 Floor: PVC floor



SN-CD-014

Upper and lower cover: Steel plate
 spraying
 Sightseeing wall: Three pieces of
 safety glass
 Decorative top: Integral board and the
 letters on both sides
 Cage wall: Stainless steel plate
 Handrail: Stainless steel double pipe
 Floor: PVC floor

SN-CD-006

Upper & Lower Cover: Steel
 Plate
 Viewing Glass: Laminated
 Glass(5LYS)
 Cabin Wall: Heating Eching
 Sliding SLUB
 Handrail: SLUB Tube
 Floor: PVC



PANORAMIC ELEVATOR CAR DECORATION

SN-CD-940

Modern Solution

Center plate: Mirror, extra relief,
Stainless
Auxiliary board: Wood grain relief



MODERN SERIES



SN-CD-934

Center plate: Mirror, sliding



SN-CD-945

Upper & Bottom Canopy: Steel
Panel Lighting
Viewing Glass: Sandblasted glass
Decorative top: Steel panel, Acrylic
wall Lighting
Cage wall: Stainless steel panel tube
Handrail: Stainless steel tube
Floor: PVC

SN-CD-941

Upper & Bottom Canopy: Steel
Covered
Viewing Glass: Laminated
Glass (Plexi)
Cage Wall: Mirror Sliding M. 10
Handrail: S.S. Tube
Floor: PVC



SN-CD-988

Upper and lower cover: Ladder
sandblasted steel plate and decorative
lights
Lighting wall: Safety laminated glass
Decorative top: Multiple round acrylic for
lamp, decorative lights on both sides
Cage wall: Stainless steel panel tube
Handrail: Single stainless steel tube
Floor: PVC floor



SN-CD-933

Upper & Bottom Canopy:
Sandblasted Acrylic Cover with
Metal Cover and Steel Plate
Sandblasting Coating
Viewing Glass: Laminated
Glass (Plexi)
Cage Wall: Stainless steel handles
Handrail: Stainless steel double
tube
Floor: PVC



SN-CD-981

Upper and lower cover: Steel plate
sliding
Lighting wall: Three pieces of
safety glass glass
Decorative top: Multi-layer reflective
prismatic board plus acrylic light
Cage wall: Stainless steel panel tube
Handrail: Stainless steel single tube
Floor: PVC floor

PANORAMIC ELEVATOR CAR DECORATION



SN-CD-961 *Luxury Solution*

Upper&Bottom Canopy: Baked External with Light Deck
Viewing Glass: Laminated Glass(3Pcs)
Cabin Wall: Golden Mirror Etching St/Br
Handrail: St/Br Tube
Floor: PVC

LUXURY SERIES



SN-CD-953

Upper&Bottom Canopy: Heating Round
Viewing Glass: Laminated Glass(3Pcs)
Cabin Wall: Mirror Etching St/Br
Handrail: St/Br Tube
Floor: PVC



SN-CD-964

Upper&Bottom Canopy: Baked External with Light Deck
Viewing Glass: Laminated Glass(3Pcs)
Cabin Wall: Golden Mirror Etching St/Br
Handrail: St/Br Tube
Floor: PVC



SN-CD-952

Upper&Bottom Canopy: Half Round Baked External with Acrylic Top
Light Deck
Viewing Glass: Laminated Glass(3Pcs)
Cabin Wall: MIRROR Etching St/Br
Handrail: St/Br Tube
Floor: PVC



SN-CD-976

Upper and lower cover: Semitransparent acrylic cover and stainless steel ceiling
Lighting unit: Three pieces of safety light
Decorative top: Multi-layer reflective process board with tube lamp
Cabin wall: Mirror, hot stamp, and glass
Floor: PVC floor



SN-CD-978

Upper and lower cover: Organic plate with metal strip and five decorative steel plate
Lighting unit: Safety clip plate
Decorative top: Integral board with tube lamp
Cabin wall: Mirror, hot stamp, etching, stainless steel
Handrail: Stainless steel double joint
Floor: PVC floor



SN-CD-975

Upper and lower cover: "Diamond round" plate lighting plate with decorative light
Lighting unit: Three pieces of safety light plate
Cabin wall: Stainless steel stainless steel
Handrail: Stainless steel single plate
Floor: PVC floor

OPERATION PANEL

○ Operation panel series



ELEVATOR CEILING SERIES



SN-CC-501

Round down light emitting panel, stainless steel frame. Facia, with light distribution



SN-CC-502

Triangular stainless steel down light panel is equipped with 30° angle before transparent light plate, central part lighting design of wide angle panel



SN-CC-503

Stainless steel mirror surface panel with square distribution stainless steel frame



SN-CC-519

Round up panel model, stainless lighting design of down light



SN-CC-520

Round down panel model, white opaque panel, up lighting design of down light



SN-CC-521

Round hole up panel model, up lighting design of down light



SN-CC-504

Stainless steel mirror panel before panel with light emitting panel, mirror stainless steel frame



SN-CC-505

Stainless steel mirror surface stainless lighting panel with stainless steel frame



SN-CC-506

Stainless steel mirror surface panel with square panel distribution stainless steel frame



SN-CC-522

Round glass model, stainless lighting design of down light



SN-CC-523

Round hole stainless steel panel, stainless lighting design of stainless steel



SN-CC-524

Stainless steel lighting panel, stainless stainless steel panel, stainless lighting design of stainless steel



SN-CC-507

Stainless steel mirror surface panel, stainless lighting panel, stainless steel frame



SN-CC-508

Mirror stainless steel panel is supplemented with stainless lighting transparent light plate, stainless lighting design of stainless lighting panel



SN-CC-510

Chromium mirror panel, stainless stainless steel plate is supplemented with lighting design of down lighting design of stainless steel



SN-CC-527

Stainless steel frame, white angle, lighting design



SN-CC-528

Stainless steel mirror surface frame, mirror stainless steel, stainless light



SN-CC-529

Stainless steel plate frame with lighting design of stainless lighting panel



SN-CC-511

Full lighting design, stainless steel with lighting design panel



SN-CC-515

Full lighting design, stainless steel stainless steel frame, stainless lighting design of stainless steel



SN-CC-518

Full lighting design of stainless steel



SN-CC-530

Stainless steel plate frame, full lighting design of stainless steel lighting panel



SN-CC-531

Stainless steel mirror surface frame, mirror stainless steel, stainless light



SN-CC-532

Stainless steel plate frame with lighting design of stainless lighting panel

ELEVATOR PANEL SERIES



SN-OP-301 **Standard Edition** ..
Mirror Glass, Silver



SN-OP-302 **Standard Edition** ..
Mirror Glass, Silver



SN-OP-304 **Standard Edition** ..
Mirror Glass, Silver, Silver



SN-OP-343 **Luxury Edition** ..
Mirror Glass, Silver



SN-OP-347 **Luxury Edition** ..
Mirror Glass, Silver



SN-OP-348 **Luxury Edition** ..
Mirror Glass, Silver



SN-OP-337 **Standard Edition** ..
Mirror Glass, Silver, Silver



SN-OP-308 **Standard Edition** ..
Mirror Glass, Silver



SN-OP-303 **Standard Edition** ..
Mirror Glass, Silver, Silver, Silver



SN-OP-323 **Luxury Edition** ..
Mirror Glass, Silver, Silver



SN-OP-339 **Luxury Edition** ..
Mirror Glass, Silver, Silver



SN-OP-339 **Luxury Edition** ..
Mirror Glass, Silver



SN-OP-427 **Standard Edition** ..
Mirror Glass, Silver



SN-OP-321 **Standard Edition** ..
Mirror Glass, Silver



SN-OP-322 **Luxury Edition** ..
Mirror Glass, Silver



SN-OP-358 **Luxury Edition** ..
Mirror Glass, Silver, Silver



SN-OP-305 **Luxury Edition** ..
Mirror Glass, Silver, Silver



SN-OP-306 **Luxury Edition** ..
Mirror Glass, Silver, Silver

ELEVATOR FLOOR SERIES



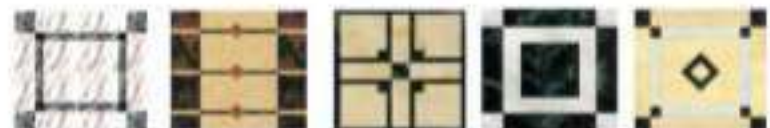
SN-CN-601

SN-CN-602

SN-CN-603

SN-CN-604

SN-CN-605



SN-CN-606

SN-CN-610

SN-CN-615

SN-CN-620

SN-CN-621



SN-CN-609

SN-CN-610

SN-CN-613

SN-CN-614

SN-CN-608

OPTIONAL COLORS

RAL 9001
PAL 7047RAL 9002
PAL 7048RAL 9003
PAL 7070RAL 9004
PAL 7030RAL 9005
PAL 9022RAL 9006
PAL 9024RAL 9007
PAL 9021RAL 9008
PAL 9011

ELEVATOR HANDRAIL SERIES



SN-CH-701



SN-CH-705



SN-CH-711



SN-CH-702



SN-CH-704



SN-CH-706



SN-CH-708



SN-CH-707

FREIGHT ELEVATOR



❶ A loading giant that can release more and more cargo pressures for you

SUNNY freight lift series fully utilizes the advanced and fully computerized SUNNY technology. It employs the well-developed VVVV speed system of SUNNY elevator. It is simple in structure and convenient to repair and maintain. It fulfills a qualitative leap in the aspects of the speed performance and running control. It brings about the more stable and reliable system, the lower noise, the smoother running, the more accurate leveling. It is more and more easy for the goods entry and exit. In addition, SUNNY freight lift series can offer the more protection. The high speed leveling capabilities and suspension interface ensure to satisfy the special requirements from users.



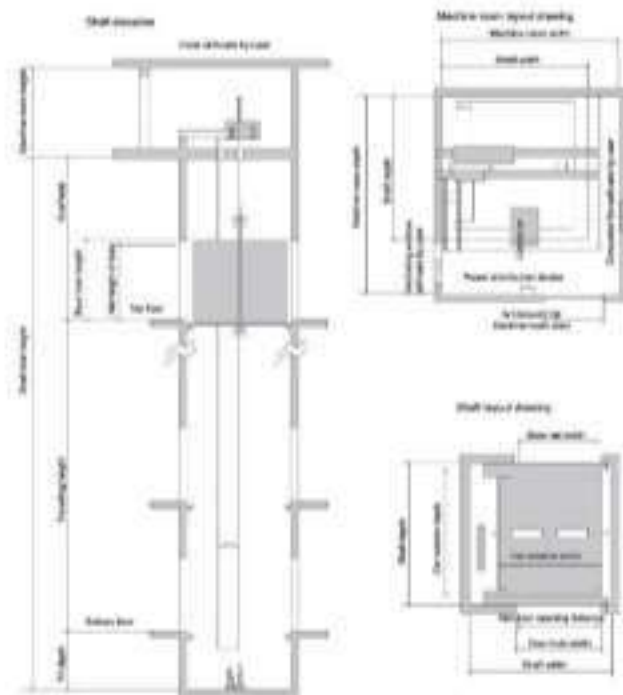
❷ Light curtain protection

Several protective light curtains are forced at the entrance of the elevator, which sensitively detects and responds to any objects that intrude into the elevator cabin. The safety of human and cargoes are guaranteed.

❸ The extremely humane operation

It is equipped with fully automatic collective selective function. It can fully operate with driver / without driver. The operation has specialty and additionally sets "door-stay delay" button in the operation box. Door-stay delay time can be flexibly adjusted at the according to the requirements. You feel more at ease at loading and unloading the goods out of the freight setting.

Freight Elevator Construction Sketch



Freight elevator parameter table

Level (m)	Speed (m/s)	Net area of cabin (m ²)		Shaft net open width (m)		Machine room net dimension (m)		Door open width (m)
		0.500 (1000kg)	1.100 (1500kg)	width 1.600	width 1.800	width 1.600	width 1.800	
500	0.5	1000*1000	1100*1100	2000*1600	2000*1800	4000	3000	2000
700	0.5	1000*1000	1100*1100	2000*1600	2000*1800	4000	3000	2000
	1.0	1500*1500	1600*1600	2500*1600	2500*1800	4500	3500	2500
	1.5	2000*2000	2100*2100	3000*1600	3000*1800	5000	4000	3000
900	0.5	1500*1500	1600*1600	2500*1600	2500*1800	4500	3500	2500
	1.0	2000*2000	2100*2100	3000*1600	3000*1800	5000	4000	3000
1100	0.5	2000*2000	2100*2100	3000*1600	3000*1800	5000	4000	3000
	1.0	2500*2500	2600*2600	3500*1600	3500*1800	5500	4500	3500
1300	0.5	2500*2500	2600*2600	3500*1600	3500*1800	5500	4500	3500
	1.0	3000*3000	3100*3100	4000*1600	4000*1800	6000	5000	4000

©2015 SUNNY Elevator Co., Ltd. All rights reserved.

CAR ELEVATOR



Perfect Space for Cars

We develop and produce SUNNY automobile elevator through absorption, transformation and enhancement by introducing the world's well-developed automobile elevator technology. The powerful technical capacity of SUNNY reduces the traction system burden due to uneven force to the elevator car. It solves the technical obstacle of shaking elevator car due to noise production. It optimizes the characteristics of the product series.



i. Dual operation panels design (Optional)

There are two operation panels in the car. Therefore the driver can operate the elevator to the car without stepping out of it.



ii. Special-purpose control and display system

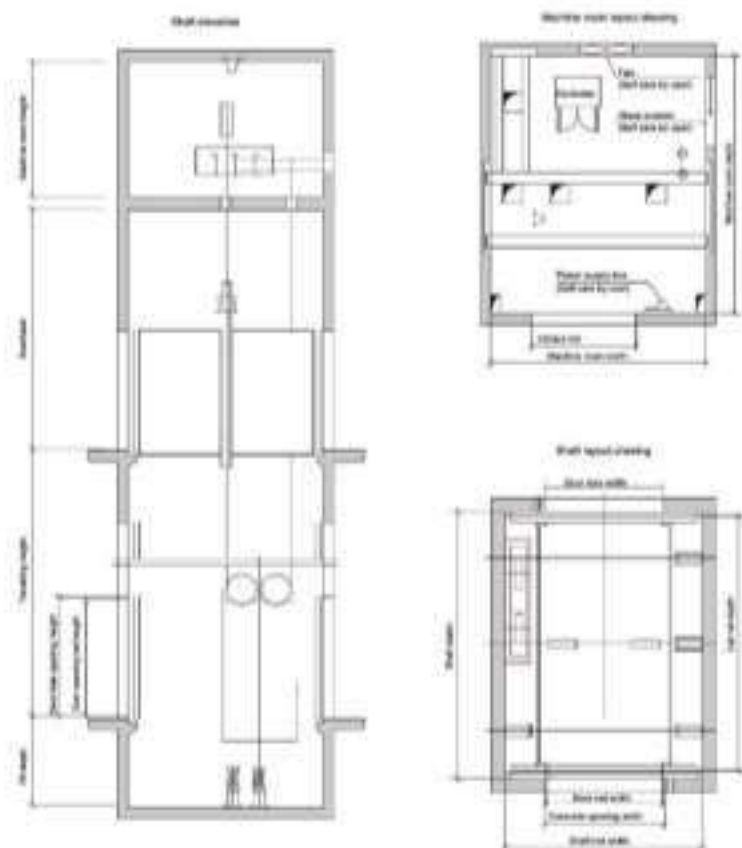
Special control panel and display system is convenient for the driver to understand the car.



iii. Front and rear opening elevator car

The elevator car has front and rear door opening, which is more convenient for the safety center and for the car to enter smoothly from the elevator shaft.

Car Elevator Construction Sketch



Car elevator parameter table

Model (mm)	Speed (m/s)	Car door type	Car door opening (mm)	Shaft car width (mm)	Shaft car structure		Shaft car depth (mm)	
					Shaft car width (mm)	Shaft car depth (mm)		
3000	0.250-0.3	Four Panel Center Opening	2400*2000	2100*1600	4100*1600	1600	4800	4500*1600*3000
5000	0.3	Four Panel Center Opening	3600*2000	3000*1200	4700*1800	1600	4800	4700*1800*3000

Shaft dimensions only, for other dimensions please consult SUNNY elevator.

FREIGHT ELEVATOR CAR DECORATION



Side Opening

SN-CD-F100

(Standard)

Item	Specification
Car ceiling	Painted powder-coating ceiling light
Ventilation	Stainless fan
Car wall	Painted powder-coating Marine stainless steel (Optional)
Car door	Painted powder-coating Marine stainless steel (Optional)
Floor	Checkered stainless steel plate
SK	Steel wire (Car width = 1000) Reinforced aluminum structure (Car width = 1000)

SN-CD-F200

(Standard)

Item	Specification
Car ceiling	Painted powder-coating ceiling light
Ventilation	Stainless fan
Car wall	Painted powder-coating Marine stainless steel (Optional)
Car door	Painted powder-coating Marine stainless steel (Optional)
Floor	Checkered stainless steel plate
SK	Steel wire (Car width = 1000) Reinforced aluminum structure (Car width = 1000)



Double-Folded Center Opening Type

OPERATION PANEL



SN-CDP-150

(Optional panel frame color: SS steel)

FLOOR



Ordinary checkered
steel plate I
(Standard)



Ordinary checkered
steel plate II
(Optional)

CRASH BARRIER



Wooden



Rubber

LANDING DOOR



Center opening



Side opening



Double-folded
center opening type



3-Folded
center opening type

POWDER COATING COLOR(OPTIONAL)



SN-9001



SN-9002



SN-9003



SN-9007

ESCALATOR



Perfect Model Brings About The Better Riding Experience

Experience long life, energy efficient driving, stable and reliable performance, all on the palm right hand side, is the best-riding (with SURET) escalator in the world. Performance, practical and flexible design is what different customer wants. Priority Use of comprehensive vertical Technology (VVT) and advanced research and advanced manufacturing technology, SURET escalator is more perfect, safe, comfortable, energy-saving, easy maintenance.

Optimized Design Saves The Space

Minimum main size greatly saves the occupied space. The compact yet high design brings about a clean, comfortable layout.

City Large-flow Traffic Solution Plan Specialist

It successfully combines with human-oriented ideas, it has the advanced structure and best design. It is smooth and comfortable to operate. Superior and smooth handrail drive, traffic flow light upper height and dynamic. It perfectly connects with muscular cover plates, sliding plate, leveling plate. It smoothly transfers to big emergency and landing.

SURET escalators are widely applicable for the airport, railway station, high grade hotel, CBD, large-scale shopping center, public facilities etc. It adds a brilliant sight for the modern building.

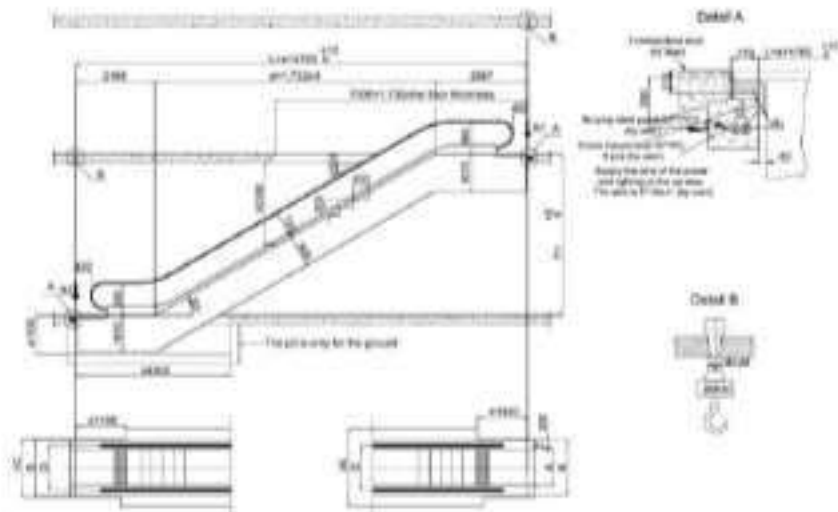
It is free to adjust the customer profile steel with unique structure. High intensity, through and cutting, good effect, long life.

It The advanced international manufacturing level, technology, general assembly, leading guaranteed the passenger smooth path.

It Space-saving (P1) maintenance-free computer control, accurate real-time monitor in the running conditions. It automatically stops in any abnormal conditions. It also promptly and automatically takes recovery, dispense the trouble code.



30° ESCALATOR CONSTRUCTION SKETCH



Handing force

Step width	800	900	1000	Normal
0.800	0.80/0.80	0.80/1.00	0.80/1.10	1.00
0.900	0.80/0.90	0.80/1.10	0.80/1.20	1.10

Power (kW) (step width / 1000) (steps/min)

0.800	0.900	1.000
1.00/0.80/20	1.20/0.90/20	1.40/1.00/20

Table of load of escalator treads
maximum load (kg/m²)

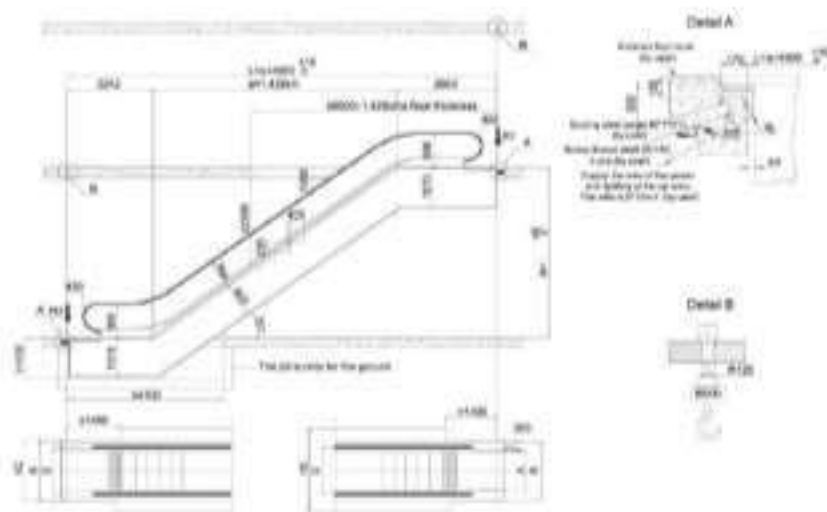
	Floor			Escalator
	Step width 800	900	1000	
Without VVDF	100	100	100	1000
	100	2	2	
	100	2	2	
With VVDF	100	100	100	1000
	100	2	2	
	100	2	2	

Standard specification and dimension

Model	20-25-30-35-40-45-50-55-60-65
Step width	800 900 1000
Step height	130 150 160 180
Step depth	1 100 100 100
Handrail height	1 100 100 100
Handrail diameter	2 50 50 50
Handrail material	2 1.18 1.18 1.18

Item	Type	Specification and dimension
* The load capacity is suitable for the applications where the height is lower for 1700 mm step width or below. If there are to be selected at the top of the track.	Step	20-25-30-35-40-45-50-55-60-65
	Handrail	20-25-30-35-40-45-50-55-60-65
	Step	130-150-160-180
	Handrail	100-120-130-150
	Step depth	100-100-100-100
	Handrail diameter	50
	Handrail material	1.18
	Step height	130-150-160-180
	Step depth	100-100-100-100
	Handrail diameter	50

35° ESCALATOR CONSTRUCTION SKETCH



Handing force

Step width	800	900	1000	Normal
0.800	0.80/0.80	0.80/1.00	0.80/1.10	1.00
0.900	0.80/0.90	0.80/1.10	0.80/1.20	1.10

Power (kW) (step width / 1000) (steps/min)

0.800	0.900	1.000
1.00/0.80/20	1.20/0.90/20	1.40/1.00/20

Table of load of escalator treads
maximum load (kg/m²)

	Floor			Escalator
	Step width 800	900	1000	
Without VVDF	100	100	100	1000
	100	2	2	
	100	2	2	
With VVDF	100	100	100	1000
	100	2	2	
	100	2	2	

Standard specification and dimension

Model	20-25-30-35-40-45-50-55-60-65
Step width	800 900 1000
Step height	130 150 160 180
Step depth	1 100 100 100
Handrail height	1 100 100 100
Handrail diameter	2 50 50 50
Handrail material	2 1.18 1.18 1.18

Item	Type	Specification and dimension
* The load capacity is suitable for the applications where the height is lower for 1700 mm step width or below. If there are to be selected at the top of the track.	Step	20-25-30-35-40-45-50-55-60-65
	Handrail	20-25-30-35-40-45-50-55-60-65
	Step	130-150-160-180
	Handrail	100-120-130-150
	Step depth	100-100-100-100
	Handrail diameter	50
	Handrail material	1.18
	Step height	130-150-160-180
	Step depth	100-100-100-100
	Handrail diameter	50

MOVING WALK



Extremely strong conveying capacities

- Moving walk has extremely strong conveying capacity. It can satisfy the traffic requirements of modern people in various aspects. It is suitable for the airport, shopping centers, hotels, recreation centers etc.
- Its simple and innovative design fully meets requirements in the space. Its frame structure is strong enough for any kind of load. As the novel form of conveying large-scale shopping plaza and hotel airport, train station, it saves every piece of precious space. It fully satisfies the requirements of modern city traffic.
- 0-12° angle of inclination can be freely choice according to different use and environment in the building.

Perfect Experience, Whole Hearted Contribution of SUNNY Elevator

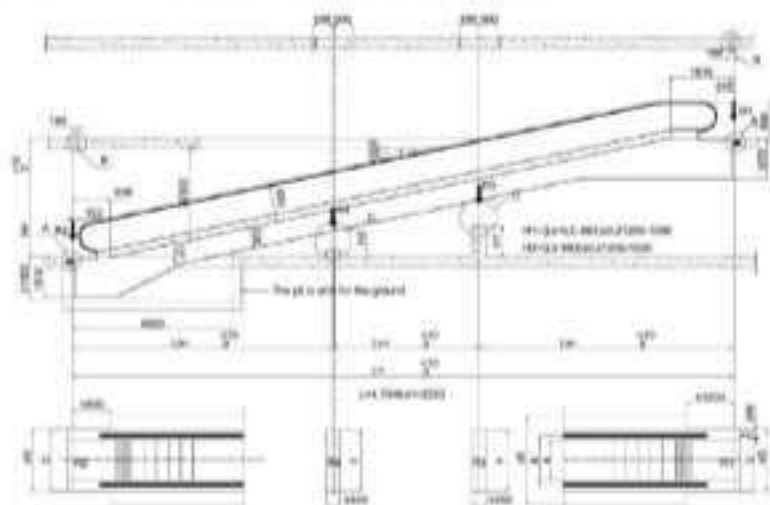
SUNNY moving walk with the intention of large passenger flow, long operation time, high efficiency delivery of passengers, luggage and goods. It follows the world's high-tech development trend. It applies the advanced transmission craft & technology. It goes all the way out SUNNY moving walk, 0-12° multiple angles are available for the user's free choice. SUNNY moving walk is extremely applicable for airports, big shopping malls, exhibition centers, scenic markets, recreation centers etc. It solves big moving problems of large passenger flows. It satisfies long distance walk, carrying of luggage and suitcases and shopping cart wheel chair for the disabled and so on. It is as steady as sailing on the sea or like a fish, it is greatly convenient for people's touring and shopping.

SUNNY moving walk on behalf of the new trend of modern leading manufacturing, innovative, stylish, streamlined design and creative lighting, make the product look generous and dignified, dignify and style of the highlights with the support of the building, moving walk and architecture harmony, generous, beautiful, complemented to each other.

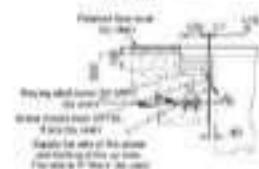
SUNNY moving walk stage beautiful, very stable structure, harmonious integration and the modern modern architecture and interior, the perfect integration of new ideas of an art technology, safe and reliable, energy saving, smooth and comfortable design concept.



12° MOVING WALK CONSTRUCTION SKETCH



Detail A



Detail B



Detail C



Roller width	Roller height	Roller diameter
1	100	100
2	100	100
3	100	100
4	100	100
5	100	100

Table of roller types with 120mm roller diameter

Roller width	Roller height	Roller diameter
1	100	100
2	100	100
3	100	100
4	100	100
5	100	100

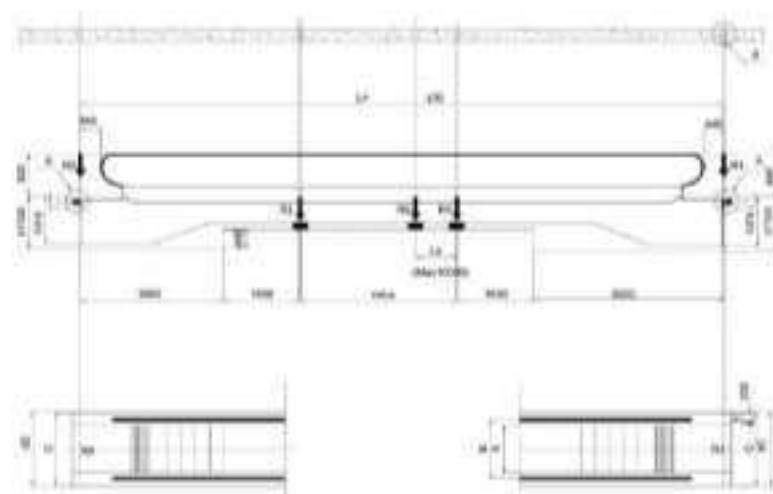
Table of roller types with 120mm roller diameter

Roller width	Roller height	Roller diameter
1	100	100
2	100	100
3	100	100
4	100	100
5	100	100

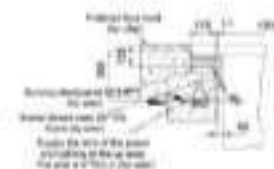
Roller width	Roller height	Roller diameter
1	100	100
2	100	100
3	100	100
4	100	100
5	100	100

Roller width	Roller height	Roller diameter
1	100	100
2	100	100
3	100	100
4	100	100
5	100	100

0° MOVING WALK CONSTRUCTION SKETCH



Detail A



Detail B



Table of roller types with 120mm roller diameter

Roller width	Roller height	Roller diameter
1	100	100
2	100	100
3	100	100
4	100	100
5	100	100

Table of roller types with 120mm roller diameter

Roller width	Roller height	Roller diameter
1	100	100
2	100	100
3	100	100
4	100	100
5	100	100

Roller width	Roller height	Roller diameter
1	100	100
2	100	100
3	100	100
4	100	100
5	100	100

Roller width	Roller height	Roller diameter
1	100	100
2	100	100
3	100	100
4	100	100
5	100	100